

Notes
To be read in conjunction with relevant consultants drawings.

Revision
A SRH 09/09/2012 Plot A mix revised, Parking spaces identified
B SRH 01/10/2012 Plot A mix revised, Parking spaces identified

Plot Schedule

Home Type	Number of Bedrooms	Parking Required	Quantity of Type	Quantity of Parking
Type A	4	2	4	8
Type B	3	2	6	12
Type C	2	2	7	14
Type D (Plot)	2	2	0	n/a
Type E	4	2	0	n/a
Type F	2	2	0	n/a
Type G	4	2	0	n/a
Type H*	2	2	6	12
Totals			23	46+5 visitor

* type suitable for affordable housing

Note 1:
Courtyard Parking and access is shared but spaces will be allocated and delineated (block paving shown)

Note 2:
Any Pocket Park Areas are shared use / ownership tba

Note 3:
Cycle storage is within the garden of each dwelling. Any Communal Cycle storage Indicated belongs to adjacent apartments

Note 4:
Refuse storage is within the garden of each dwelling.

Note 5:
All roads and boundaries are indicative and subject to further design and or site confirmations

- Single storey
- 2 storey
- 2.5 storey
- 3 storey



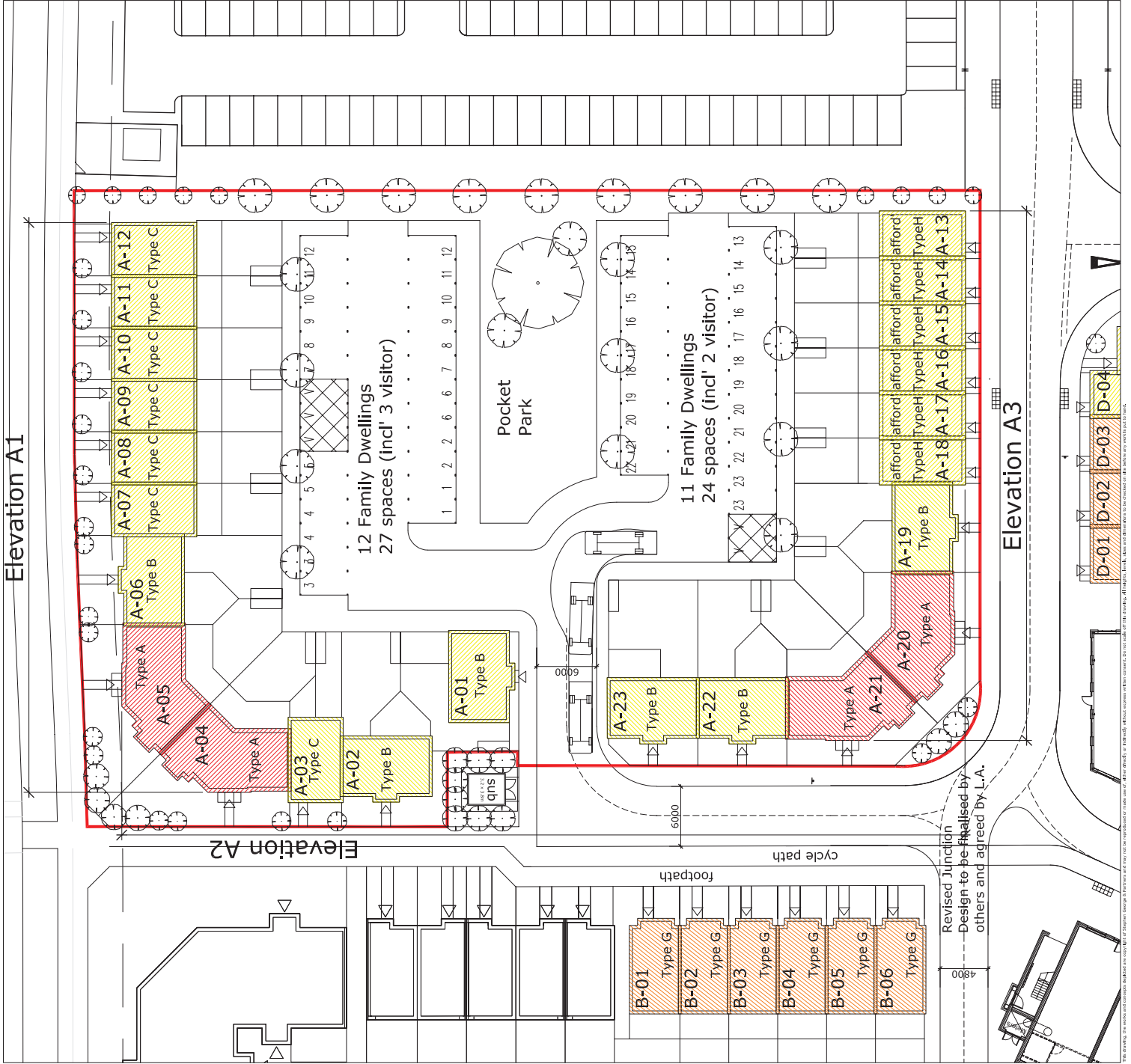
STEPHEN GEORGE & PARTNERS LLP

120 Ludlow Street
 Birmingham B2 4JH
 Tel: 0121 512 8852 Fax: 0121 554 1895
 www.stephengeorge.co.uk

Buckshaw Housing
 Plots A, B, C, D
 Site Plan - Plot A

Publication: 04/09/2012
 CAD reference: SRH
 Drawn: SRH
 Team: SRH
 Date: 10/07/2012
 Scale: 1:200 @ A0

Project ref: 8430-002
 Dwg ref: P002
 Rev: B



© 2012 Stephen George & Partners. All rights reserved. Design to be realised by others and agreed by L.A.